



AKTIESELSKABET KULSPIDS

SVALBARD | SPITSBERGEN





***‘A UNIQUE OPPORTUNITY TO ACQUIRE THE LAST REMAINING,
PRIVATELY OWNED LAND ON SVALBARD WITH SIGNIFICANT
ENVIRONMENTAL, SCIENTIFIC AND ECONOMIC IMPORTANCE.’***



Viewing by appointment only.

These particulars are intended only as a guide and must not be relied upon as statements of fact. Your attention is drawn to the Important Notice on the last page of the brochure.

TRAVELLING TO SVALBARD

The most common route to reach Svalbard is to fly via Oslo to Longyearbyen on Spitsbergen. The flight is approximately 3 hours with Longyearbyen airport being the world's most northerly airport to receive regular scheduled flights.

The land being sold is approximately 3 hours by boat from Longyearbyen.





NORDAUSTLANDET

Ny-Ålesund

SPITSBERGEN

Pyramiden

BARENTSØYA

Barentsburg

LONGYEARBYEN

Sveagruva

EDGEØYA

AKTIESELSKABET
KULSPIDS



SVALBARD

The islands were first used as a base by the whalers who sailed far north in the 17th and 18th centuries, after which they were abandoned. Coal mining started at the beginning of the 20th century, and several permanent communities were established.

The Svalbard Treaty of 1920 recognizes the Norwegian sovereignty over Svalbard, always subject to the stipulations in the Treaty.

The Nationals of the Treaty parties shall all be treated with the same conditions of equality to all maritime, industrial, mining and commercial activities.

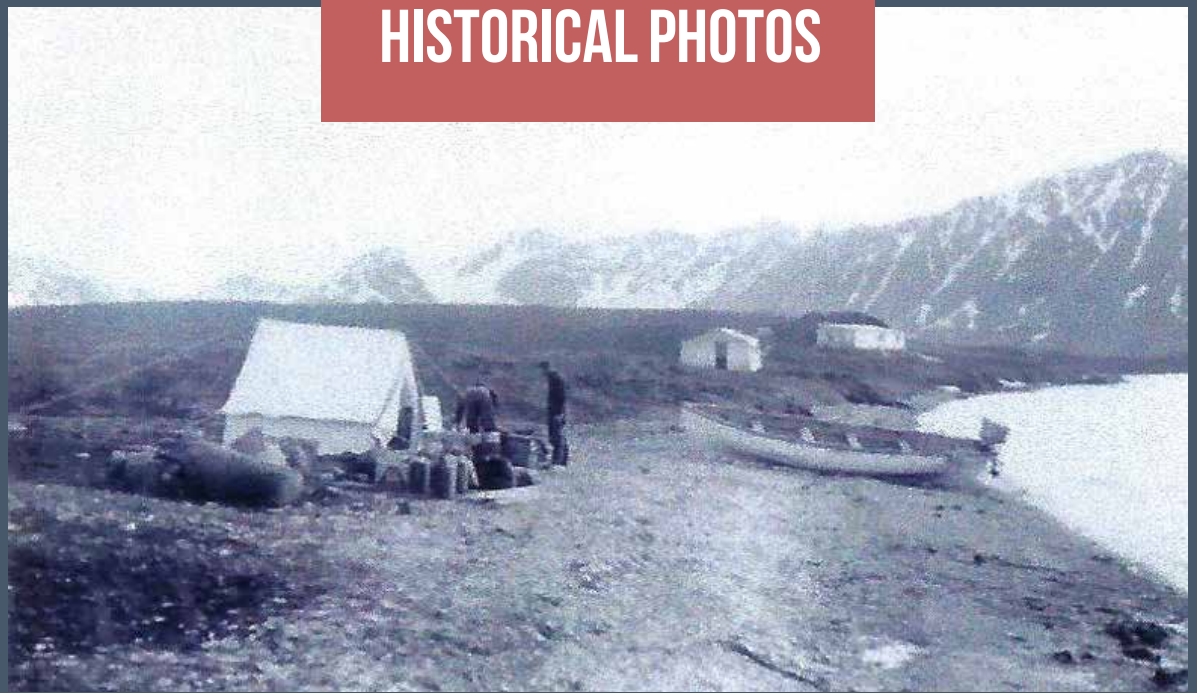
In 1925 Norway establishes the sovereignty over the islands by passing the Svalbard Act which governs the major aspects of Svalbard.

Research, satellite data downloading and tourism have now become important supplementary industries away from coal production.

Almost 3.000 people live on Svalbard which has its own university (UNIS) and among other things is famous for the Svalbard Global Seed Vault.

Approximately 60% of the archipelago is covered with glaciers, and the islands feature many mountains and fjords. The archipelago has an Arctic climate, although with significantly higher temperatures than other areas at the same latitude. The flora is adapted to take advantage of the long period of midnight sun to compensate for the polar night. Svalbard is a breeding ground for many seabirds, and is home to polar bears, reindeer, the Arctic fox, and certain marine mammals. Seven national parks and 23 nature reserves cover two-thirds of the archipelago, protecting the largely untouched, yet fragile, natural environment. This extraordinary land lies midway between the northern coast of Norway and the North Pole in the Arctic Ocean and this sale represents the only opportunity to acquire land on Svalbard and in the High Arctic.

HISTORICAL PHOTOS



SURROUNDING AREA



POLAR NIGHT AT LONGYEARBYEN



POLAR BEAR



ARCTIC FOX



SVALBARD REINDEER



SATELLITE RECEIVERS AT SVALBARD



AERIAL SATELLITE VIEW





THE COMPANY

The single purpose company holds the exclusive ownership to the Treaty-property Søre Fagerfjord at Wedel Jarlsberg Land in Western Svalbard, recognised according to the Svalbard Treaty. The Spitsbergen Treaty allows for the owners of landed property always be at liberty to establish and use for their own purposes wireless telegraphy installations, which will be free to communicate on private business with fixed or moving wireless stations. The northern point of Svalbard creates unique conditions for satellite communication.

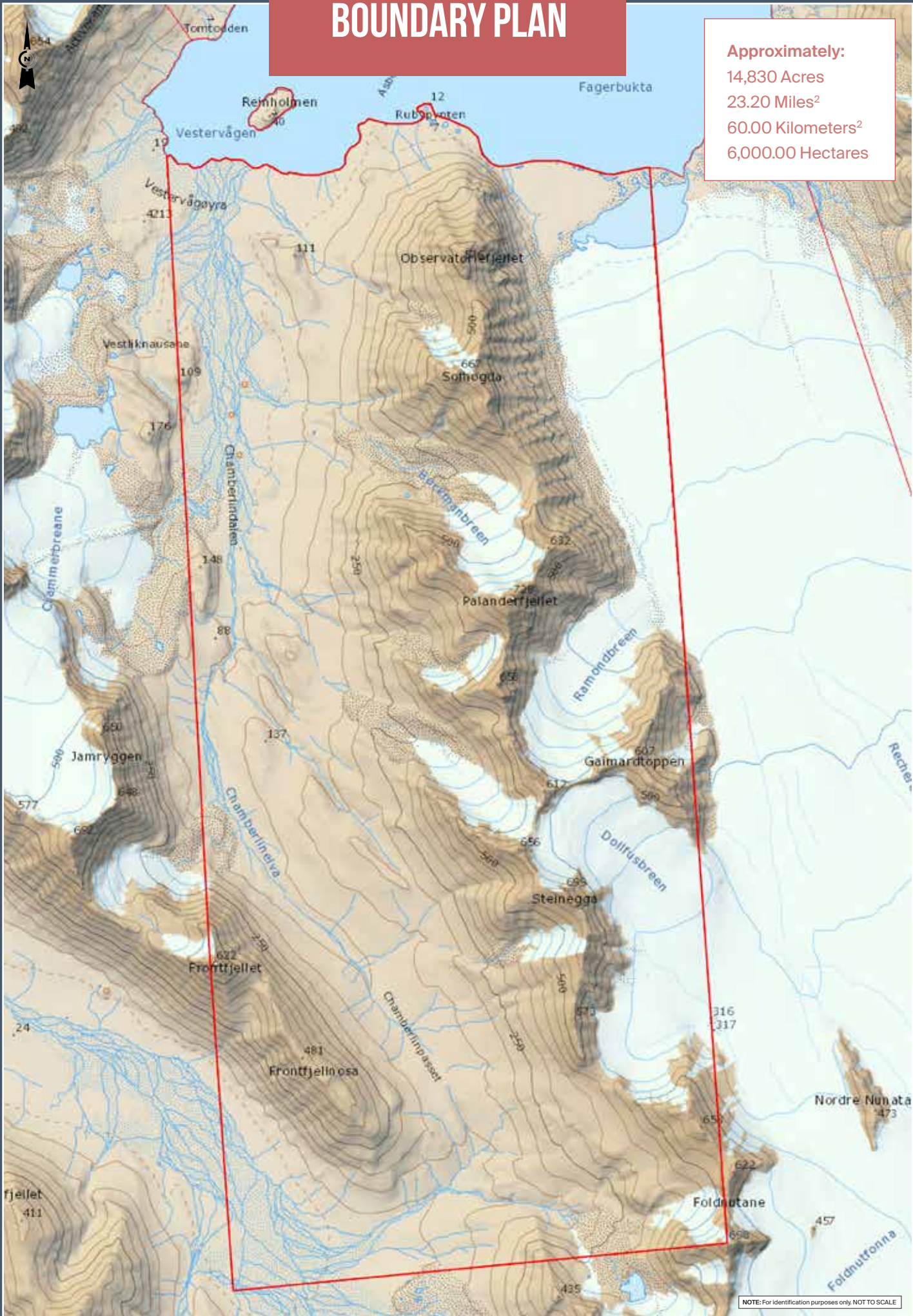
The company being sold 'Aktieselskabet Kulspids', is a privately owned Norwegian limited company incorporated on 26th October 1910 and registered in the Norwegian Companies Register with a registration number of '934 643 569'. Ownership of the Company may be transferred to countries that have ratified the Svalbard Treaty or to citizens of such countries or companies lawfully constituted and having their administrations in such countries without any governmental licence under Norwegian public law.





BOUNDARY PLAN

Approximately:
14,830 Acres
23.20 Miles²
60.00 Kilometers²
6,000.00 Hectares





**AKTIESELSKABET
KULSPIDS**



Viewing strictly by appointment only. Please contact:

Knight Frank LLP
Country Department
55 Baker Street
London W1U 8AN

Will Matthews
+44 (0) 20 7861 1440
will.matthews@knightfrank.com

www.knightfrank.com

King & Spalding LLP
1700 Pennsylvania Avenue
NW Suite 900
Washington D.C. 20006

Thomas J Spulack
+1 202 661 7948
tspulak@kslaw.com

www.kslaw.com

IMPORTANT NOTICE

1. Particulars: These particulars are not an offer or contract, nor part of one. You should not rely on statements by Knight Frank LLP nor King & Spalding in the particulars or by word of mouth or in writing ("information") as being factually accurate about the property, its condition or its value. Neither Knight Frank LLP nor King & Spalding has any authority to make any representations about the property, and accordingly any information given is entirely without responsibility on the part of the agents, seller(s) or lessor(s). 2. Photos etc: The photographs show only certain parts of the property as they appeared at the time they were taken. Areas, measurements and distances given are approximate only. 3. Regulations etc: Any reference to alterations to, or use of, any part of the property does not mean that any necessary planning, building regulations or other consent has been obtained. A buyer or lessee must find out by inspection or in other ways that these matters have been properly dealt with and that all information is correct. 4. VAT: The VAT position relating to the property may change without notice. 5. To find out how we process Personal Data, please refer to our Group Privacy Statement and other notices at <https://www.knightfrank.com/legals/privacy-statement>. Particulars dated May 2024. Photographs dated various archived photography. Knight Frank is the trading name of Knight Frank LLP. Knight Frank LLP is a limited liability partnership registered in England and Wales with registered number OC305934. Our registered office is at 55 Baker Street, London W1U 8AN where you may look at a list of members' names. If we use the term 'partner' when referring to one of our representatives, that person will either be a member, employee, worker or consultant of Knight Frank LLP and not a partner in a partnership. If you do not want us to contact you further about our services then please contact us by either calling 020 3544 0692, email to marketing.help@knightfrank.com or post to our UK Residential Marketing Manager at our registered office (above) providing your name and address.

